

**PHP NUKE ADMIN MANUAL**  
October 2001

## Table of Contents

---

1.0 Introduction .....	1
2.0 Installation.....	1
3.0 Administration.....	2
3.1 Logging In as an Administrator .....	2
3.2 Administration Screen.....	2
3.3 Adding or Editing a Section .....	4
3.4 Creating the Article for the Home Page.....	4
3.5 Adding or Editing an Article .....	4
3.5.1 Converting Word to HTML.....	6
3.6 Copying Content into an Article.....	7
3.7 Adding a FAQ .....	8
3.8 Maintaining Surveys .....	10
 <b>Appendix</b>	
1.0 Using Word .....	11
2.0 Installing Microsoft Office HTML Filter 2.0 .....	12

## 1 Introduction

PHP Nuke (or just Nuke) is an open source portal product which allows user-maintained web sites to be constructed. Nuke is written in the language PHP, which is itself freely available.

Nuke is easy to install and use. It also runs on a variety of operating systems, including Windows NT and Windows 2000, Unix, and Linux.

Sites developed in Nuke can be tailored to meet many objectives, although some familiarity with the programming is necessary for success. Both the look and feel and the security of the site can be adjusted to meet a variety of concerns. The resulting Nuke sites are also very extensible in that new functionality can be incorporated by writing add-on functions in web languages.

## 2 Installation

The following are the basic steps you need to follow in order to set up a Nuke installation. There are slight differences depending on whether you are creating a Nuke installation for a brand-new site, or if you are creating a Nuke installation for a pre-existing site which will be transferred to your Nuke installation.

**Install the Operating System** – Linux is recommended for a variety of reasons, but Windows NT/2000 will also work.

**Install the Web Server** – Apache is recommended if running on a Linux or Unix box.. If using Windows NT/2000 then IIS (Internet Information Server) is installed as part of the operating system installation process.

If the web server is going to serve multiple web sites, then a virtual site for the target URL will need to be set up.

**Install the Database used for Nuke** – go to the [www.mysql.com](http://www.mysql.com) site and follow the instructions for installing mysql on your server.

**Install PHP** – go to the [www.php.net](http://www.php.net) site and follow the instructions for installing the programming language PHP on your server.

**Install Nuke** – go to the site [www.phpnuke.com](http://www.phpnuke.com) and follow the instructions for installing the Nuke application on your server.

**Copy Website Files** – if you are merely copying an existing site then you will need to copy the website files from where they are to the root directory of the site setup on the web server.

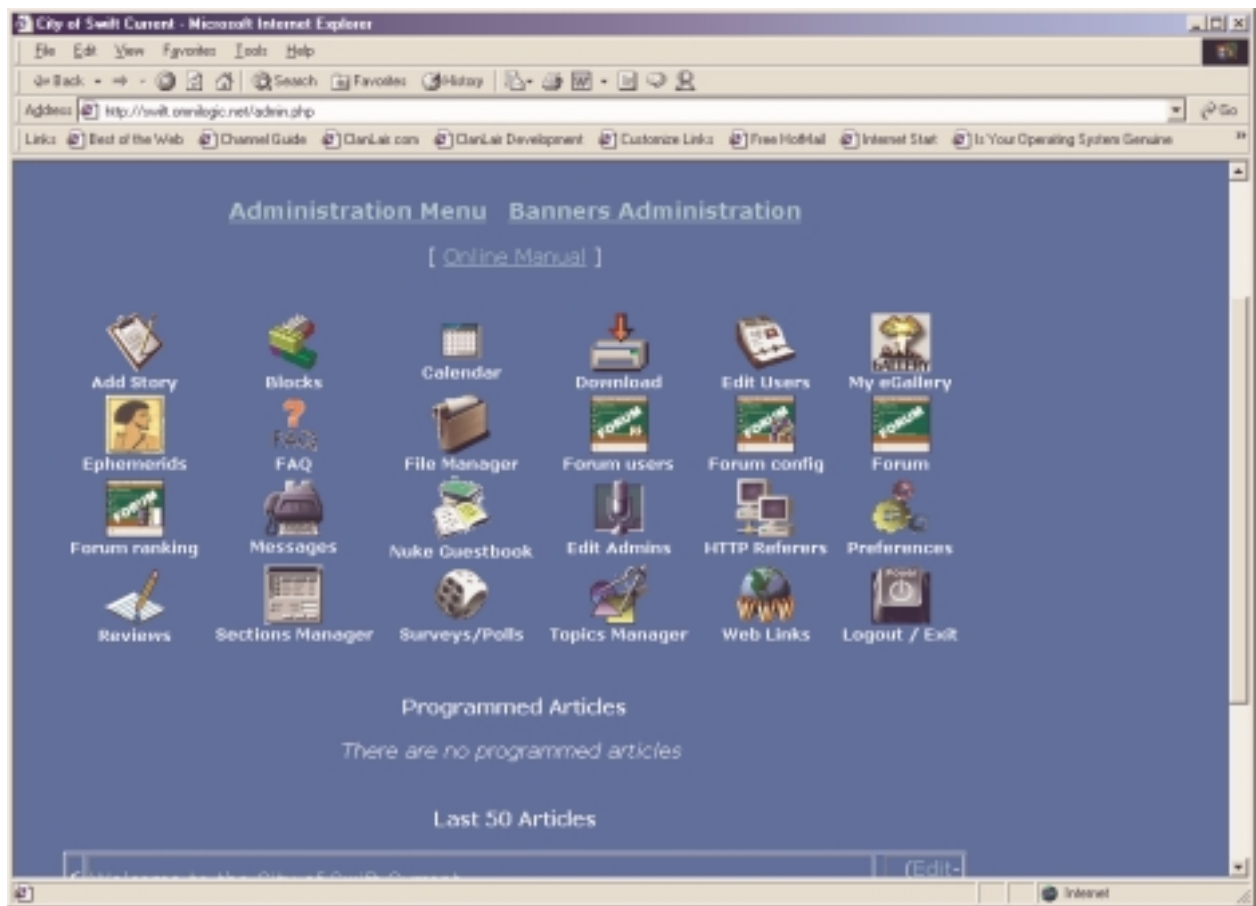
**Build the Nuke Database** – if you are building a brand new site, then your database will be setup according to the instructions you enter in the Administration area. If you are copying a website from another machine, then you will have exported scripts from the Nuke mysql database which will allow you to build the identical database on your new web server.

## 3 Administration

### 3.1 Logging In as an Administrator

To maintain the site (add content or upload new extracts) you must first login as an administrator. To do this go to the link <http://www.yoursite.com/admin.php>. A user name and password prompt will appear. Enter the user name and password and press the login button. If the login was successful the administration menu will appear. Your screen may appear differently, depending on the version of Nuke you are using and on the formatting characteristics of your site.

### 3.2 Administration Screen



The administration screen presents the user with icons to maintain the various part of the web site. These are the options that will be used relatively infrequently. Once the user is logged in as an administrator, an administration menu will also appear below the Main Menu. This Administration Menu has links to some of the more common administrative functions.

The table below outlines briefly what each of the Nuke Admin features does:

Function	Description
Add Story	There are two main ways to get content (text) loaded into your Nuke site: stories or articles.
Blocks	<p>The Blocks function houses an extensive area which can be used to format the appearance of your site. There are left blocks and right blocks, with the ability to add blocks to the extensive list that come with Nuke by default.</p> <p>You can put whatever you want in blocks, but be aware that these are intended to be relatively narrow areas on the left and right sides of the screen.</p>
Calendar	An area used to record calendar events.
Download	An area used to manage downloads. Downloads may refer to votes, reports, requests, or any other categories that you may choose to create.
Edit Users	You can set your site up to require a login to gain access to your information. This admin function will allow you to maintain your list of users.
My eGallery	Use this admin function to create a multimedia gallery.
Ephemerids	If you want catchy phrases or quotations to appear on your site depending on the day, this function can be used to maintain those items.
FAQ	This area will manage your FAQ (Frequently Asked Questions) that describes how your site or your business works.
File Manager	An area used to maintain the programs for your Nuke site. You may also choose to maintain/edit these program files outside of Nuke.
Forum Users	Use this function to maintain the user levels for your Forums.
Forum Config	This function will allow you to control the characteristics of the forum areas.
Forum	This area allows you to add categories to your forums.
Forum Ranking	A function that allows you to establish the ordering for your forum topics.
Messages	An area used to record messages which will appear on the home page of your site for a certain number of days.
Nuke Guestbook	A function that allows guests to sign a log indicating they visited the site.
Edit Admins	Use this area to establish the users you wish to have admin rights to your site.
HTTP Referers	An area that displays links that are accessing your site.

Preferences	This is where you set up the basic operation of the site. This is a good starting point when you begin with a brand-new site.
Reviews	An area used to maintain reviews.
Sections Manager	This is the main area where you will record your content. You can both create new sections here and articles for those sections.  You will note that linked pages in your site will typically display a URL that has the function "viewarticle" followed by "artid=nnn" where nnn is the number of the article displayed.
Survey/Polls	Use this function to manage surveys that you would like to run on your site.
Topics Manager	Use this area to maintain a list of topics. Most of your content will not go into this area, but will rather go under the Sections Manager area.
Web Links	This function can be used to establish a list of links on your site.
Logout/Exit	To exit the admin area.

### 3.3 Adding or Editing a Section

There are a couple of ways in Nuke to add content to your site, but in general the preferred approach is to create articles under Sections. A section allows you to group similar content together. You will need to start by creating sections for your main areas.

Create or change a section by going into the Sections Manager. You will be given a list of current sections, which you can edit if you wish. You can also create new sections by simply entering a section name and an optional section image (used throughout the Nuke site if entered). The entry area for new sections is at the bottom of the Sections Manager screen.

### 3.4 Creating the Article for the Home Page

When you first access the admin.php page for your site, you can scroll down the page to edit the article which is displayed on the home page. The home page is the first page that is displayed in your site, unless you have created a splash page.

### 3.5 Adding or Editing an Article

Use the Sections Manager function to add or maintain content for your site. Content is typically in the form of articles, and each site could potentially have thousands of articles.

There are four key elements to an article:

- a title

- a section that article belongs to
- the actual content in the form of HTML code
- and an article id

To edit an article click on the Sections Manager icon on the administration menu. Enter the article id in the form and press Ok. To find the article id, go to the page that is to be updated and look for the number after the `artid=` in the Address field of your browser.

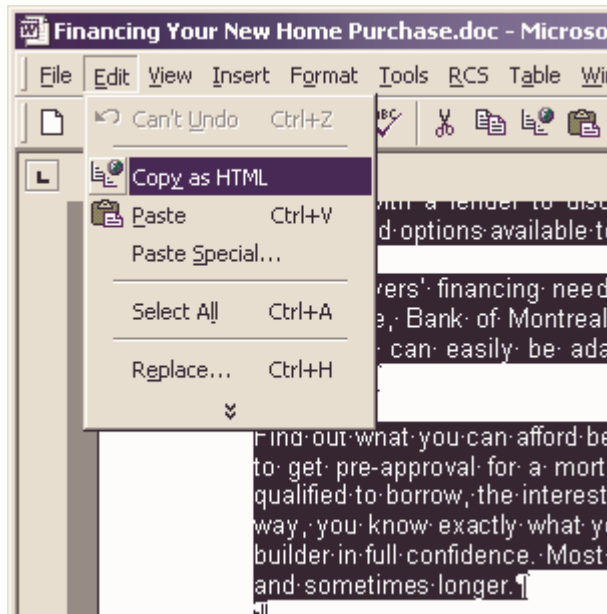
The article will be loaded into the browser window. The title is what shows up on the list of articles as users navigate through the site. The article can be moved to a different section by attaching it to a different section from the list at the top of the screen.

The actual text is recorded in a placeholder on that screen for content. You can enter content in a variety of ways, but the simplest is usually to create HTML out of a Microsoft Word document and cut and paste it into the content area of Nuke. Once in the content box, you can edit there if you wish.

This document does not describe how to format HTML documents, but other documents on this web site do. HTML is not nearly so complicated as it sounds, and most simple formatting can be easily done by even inexperienced users.

### 3.5.1 Converting Word to HTML

The simplest way to create the HTML texts which will form the content of your site is to create and format documents in Microsoft Word. See the notes in the Appendix on using Word for hints on formatting documents that will convert correctly. Once the Word document is formatted select the portion that is to be converted and then select “Copy as HTML”<sup>1</sup> from the Edit menu.



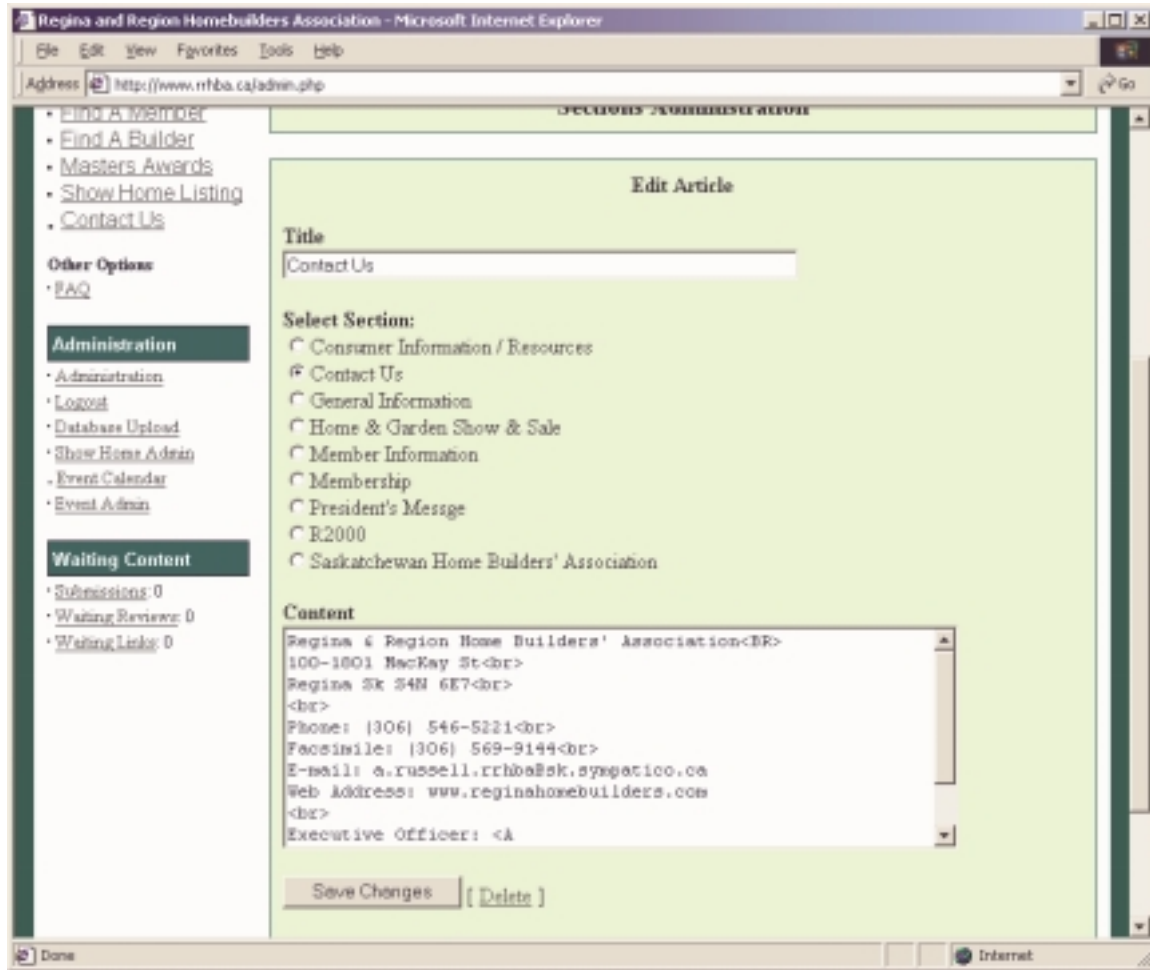
Once the document has been copied place the cursor in the content box on the section screen. If you want to overwrite whatever content you previously had, just press control A to select any existing content. Pressing control V will insert the new content at the insertion point, or replace the old content with the new content.

---

<sup>1</sup> See the section Installing “Installing Microsoft Office HTML Filter” for directions on installing the software required to use this function.

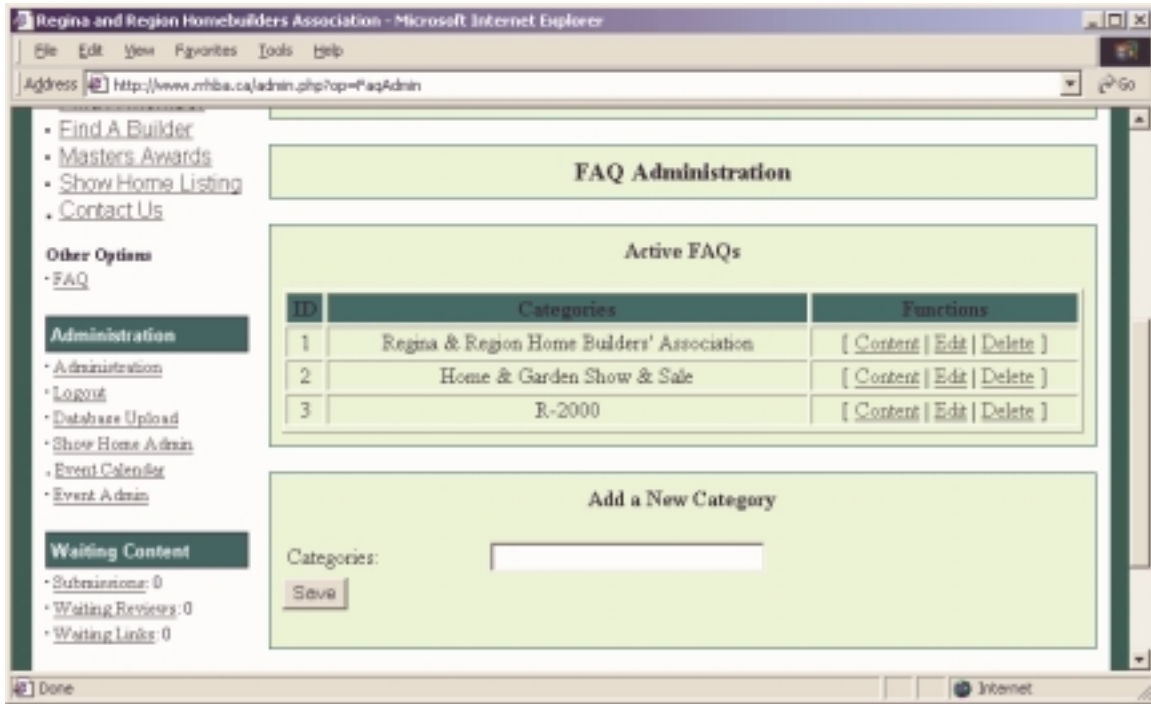
### 3.6 Copying Content into an Article

The screen below shows what the content area looks like in the Sections Manager function of Nuke.

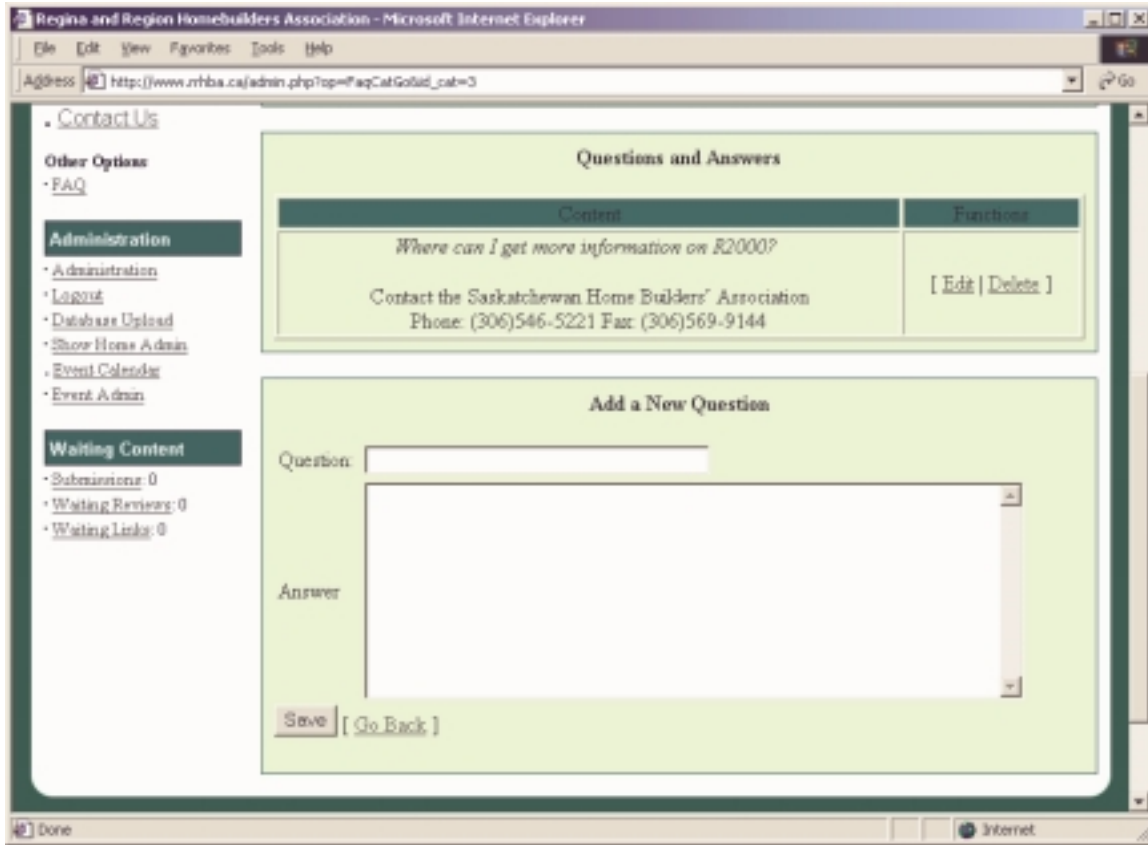


### 3.7 Adding a FAQ

To add a FAQ, click on the FAQ icon on the administration menu. This will bring up the screen below.



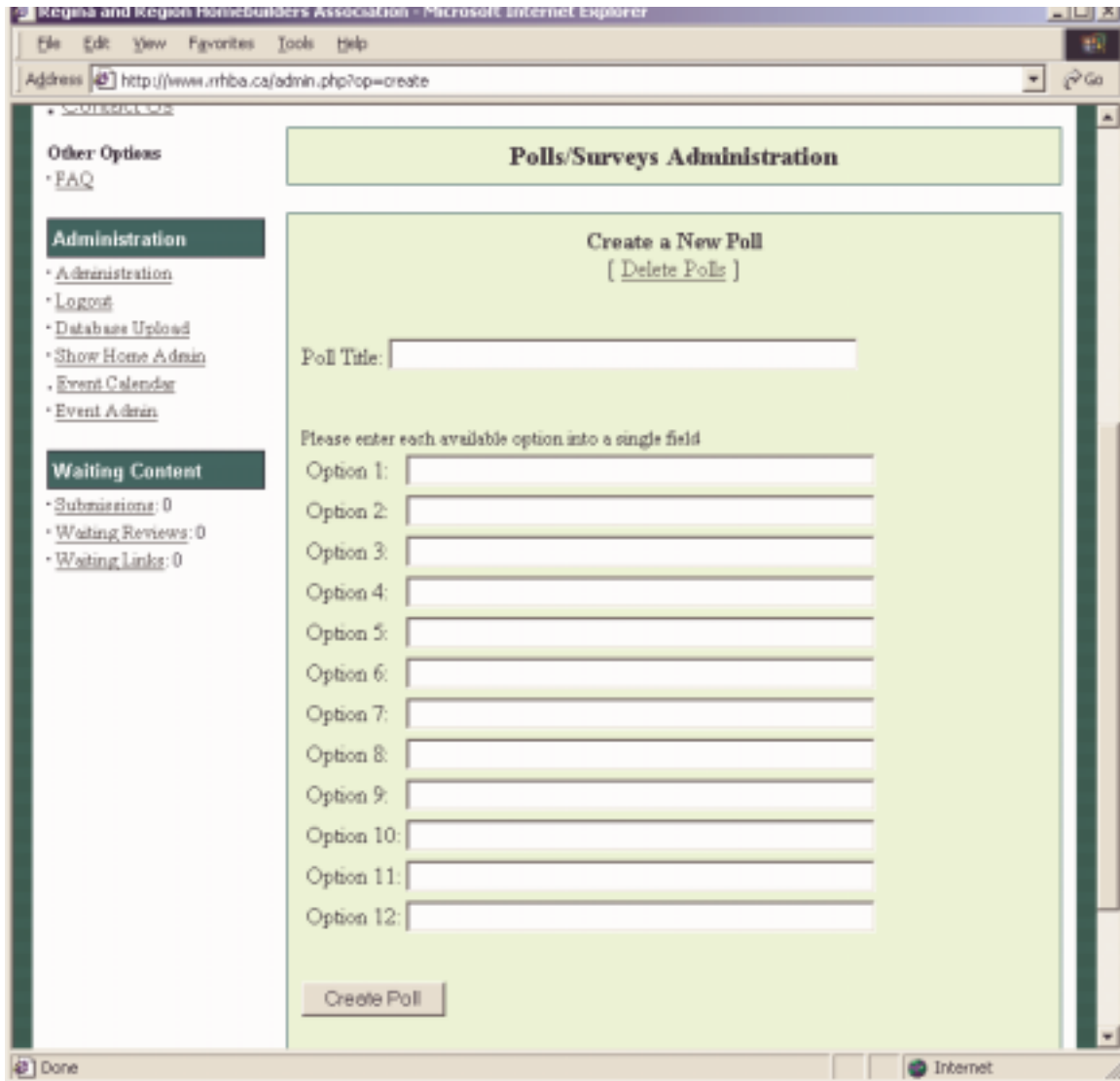
If a new category is to be added, simply fill in the Categories field and select Save. A category can be deleted or edited by clicking on the respective link beside the category. If a question is to be added, click on the “Content” link beside the category the question will belong to. The following screen will appear.



Fill in the question and the answer and press “Save”.

### 3.8 Managing Surveys

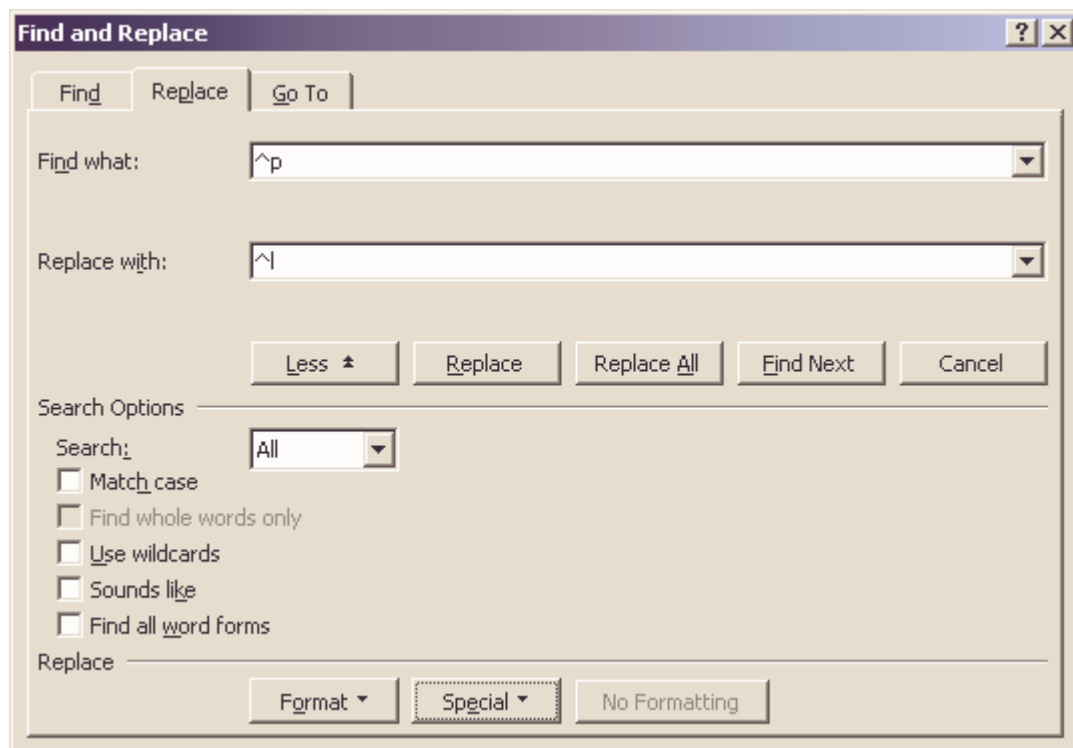
Surveys or Polls appear on the home page of your site. You can create surveys tailored to your own purposes. To modify the polls, click on the Surveys/Poll icon on the administration menu. To create new polls, fill in the appropriate fields and press Create Poll.



## Appendix

### 1 Using Word

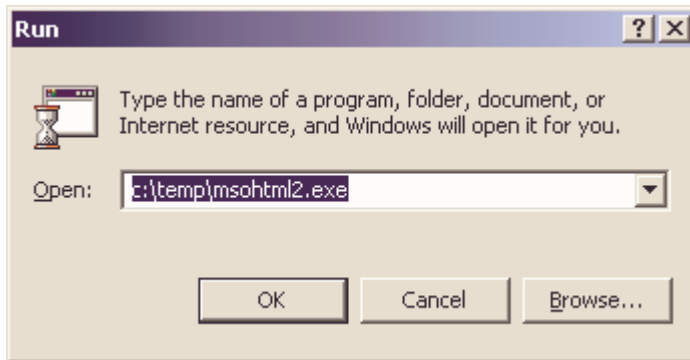
- Avoid using style codes; they do not convert correctly.
- Bullet lists do not convert correctly. Use a table with two columns and put bullets in a small column on the left and text in a bigger column on the right.
- Pictures embedded in word documents do not convert correctly.
- Convert paragraph breaks to line breaks. When paragraph breaks are converted to HTML the result is double spacing. When formatting changes, i.e. paragraph alignment or text colour a paragraph break will be required.



### 2 Installing Microsoft Office HTML Filter 2.0

1. Quit Word if it is running.
2. Copy the file `mshtml2.exe` from the "RRHBA Website" CD to `c:\temp` on the local computer.

3. Use the Run command on the start menu to run the mshtml2.exe program



4. Follow the instructions (click Yes button) on the screen when prompted to complete the installation